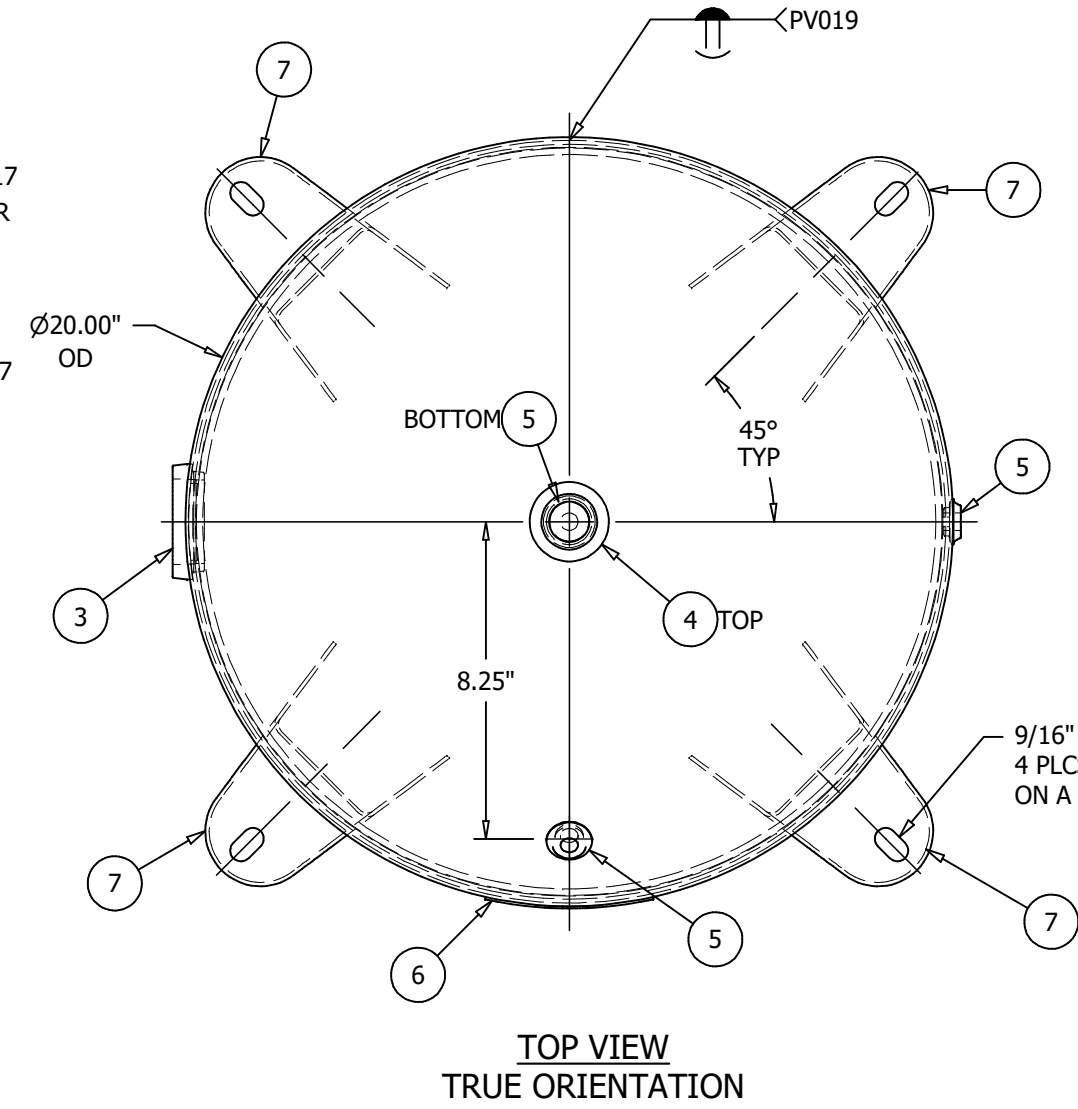
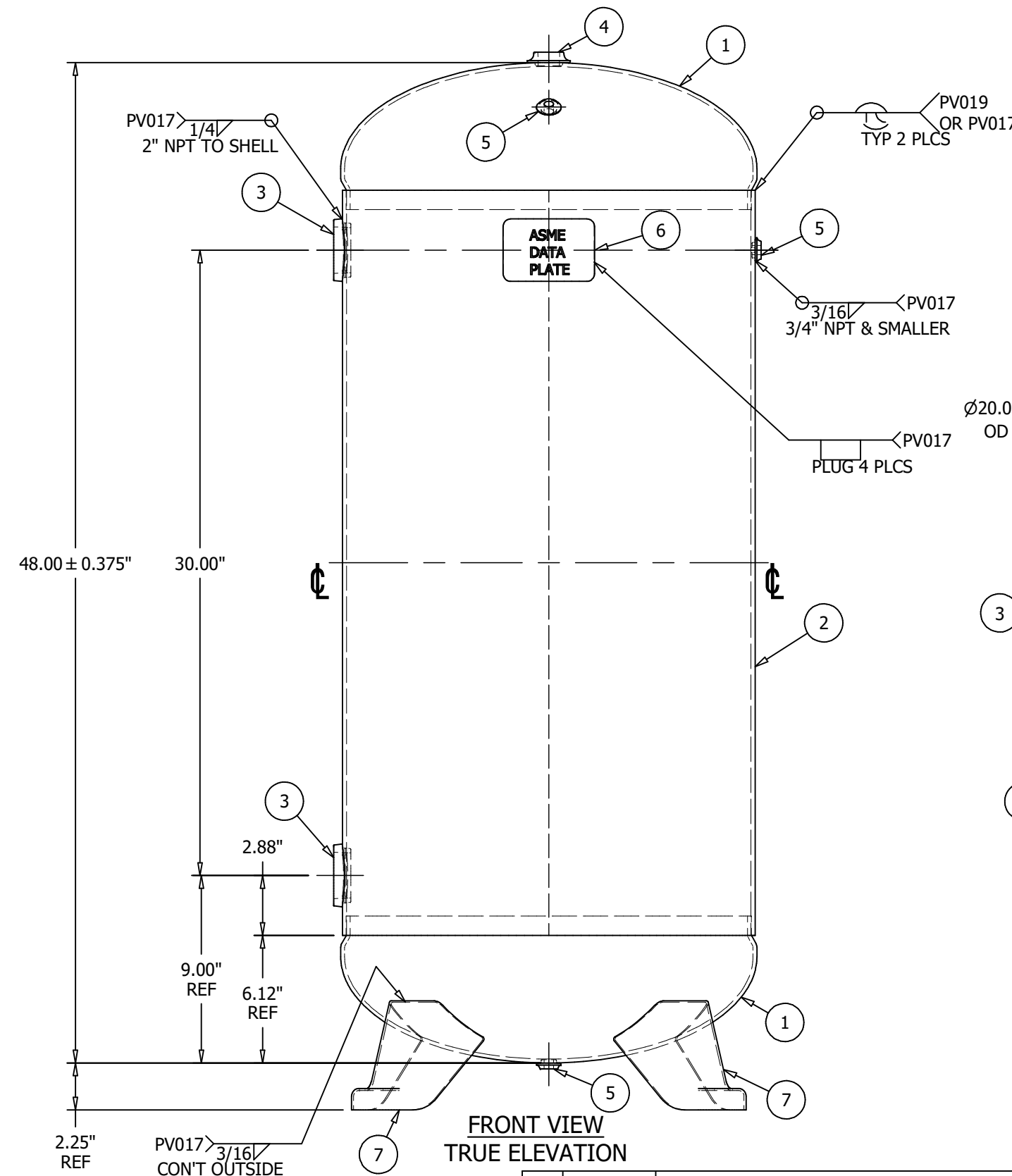


ITEM	P/N	DESCRIPTION	QTY
1	H20187J-414G	HEAD, 0.177 M/ 0.187 N x 20" 2:1 JOGGLE W/ 1.96" SF SA414-G	2
2	A10043-300-SL	SHELL BURNT 0.200 CS SA414-G 35.75 X 20.00 OD	1
3	F102001	WELD FLG 2.000 NPT CS SA181-70 RAD 958 O/R	2
4	F100750	WELD FLG 0.750 NPT CS SA181-70 FLAT 254	1
5	F100250	WELD FLG 0.250 NPT CS SA181-70 FLAT 251	3
6	A10043-300-NP	NAME PLATE FOR A10043-300 A569	1
7	S100003S	FOOT, H20X FOR 20" HORZ & VERT W/ 9/16 X 1 SLOT A1011CS-B	4



\*\*SHELL CUT SIZE IS REFERENCE ONLY  
 \*\*CPLG & FITTING 0.50 EXT PROJ TYP  
 \*\*HEAD THICKNESS SHOWN IS SPECIFIED MINIMUM  
 \*\*RADIUS INSIDE PROJECTED EDGES OF NOZZLES 1/8" MIN  
 \*\*SEE PAGE 2 FOR FINISH  
 \*\*FLANGE BOLT HOLES STRADDLE TANK C/L EXCEPT AS NOTED  
 \*\*ALL DIMS IN INCHES UNLESS NOTED OTHERWISE  
 \*\*IMPACT TEST EXEMPT PER UG 20(f)  
 20" X 48" 300# VERTICAL AIR RECEIVER  
 NOTES

REV	DATE	DESCRIPTION	ENG	QCM	AI/DATE
1	7/16/18	REVISED NAME PLATE POSITION TO NEW STANDARD, HEAD WAS H20187J	MG	BW	BQ 7/24/18
2	10/15/18	UPDATED TO DIVISIONAL WELD PROCEDURES	MG	BW	NA
3	8/19/2020	UPDATED CRN	RM	N/A	N/A

TRAVELER REQUIRED  No      FIXTURE REQUIRED  Yes IF YES THEN FIXTURE # **STOCK FOR FEET**

<b>RELEASED TO PRODUCTION</b>		TOLERANCES ARE PER EN1370 STEEL FAB STANDARD TOLERANCES		DESIGN & CALCULATIONS COMPLY WITH ASME CODE SECTION VIII, DIV1. LATEST EDITION	
SALES ORDER#		QTY:		<b>SPVGC STOCK</b>	
RELEASE DATE:		NB/SERIAL#			
HEAD THK: <u>.177</u> MIN C.A.: <u>---</u> MAT'L <u>SA414-G</u> EFF <u>85</u> %		NAT'L BD: YES    STAMP " U "		ENG. APP'L / DATE MH - 1/8/2016	
SHELL THK: <u>.200</u> NOM C.A.: <u>----</u> MAT'L <u>SA414-G</u> EFF <u>70</u> %		VOLUME: 60 APPROX GAL		QCM. APP'L / DATE BW-1/8/2016	
MAYP <u>300</u> PSI AT <u>400</u> °F		SHIPPING WEIGHT: 190 LBS		A.I. VERIFICATION / DATE BQ-1/11/2016	
MDMT <u>-20</u> °F AT <u>300</u> PSI		CRN: L4044.568013N2		<b>STEEL FAB</b>	
TEST: HYDRO AT <u>390</u> PSI		TEST: PNEU AT <u>390</u> PSI			
DATE: 12/9/2015		DRAWN BY: <b>IDV/AO</b> P/N <b>A10043-300</b>		BURLINGTON, ONT      LEBANON, VA	
				PAGE 1 OF 2      REV. 3	

