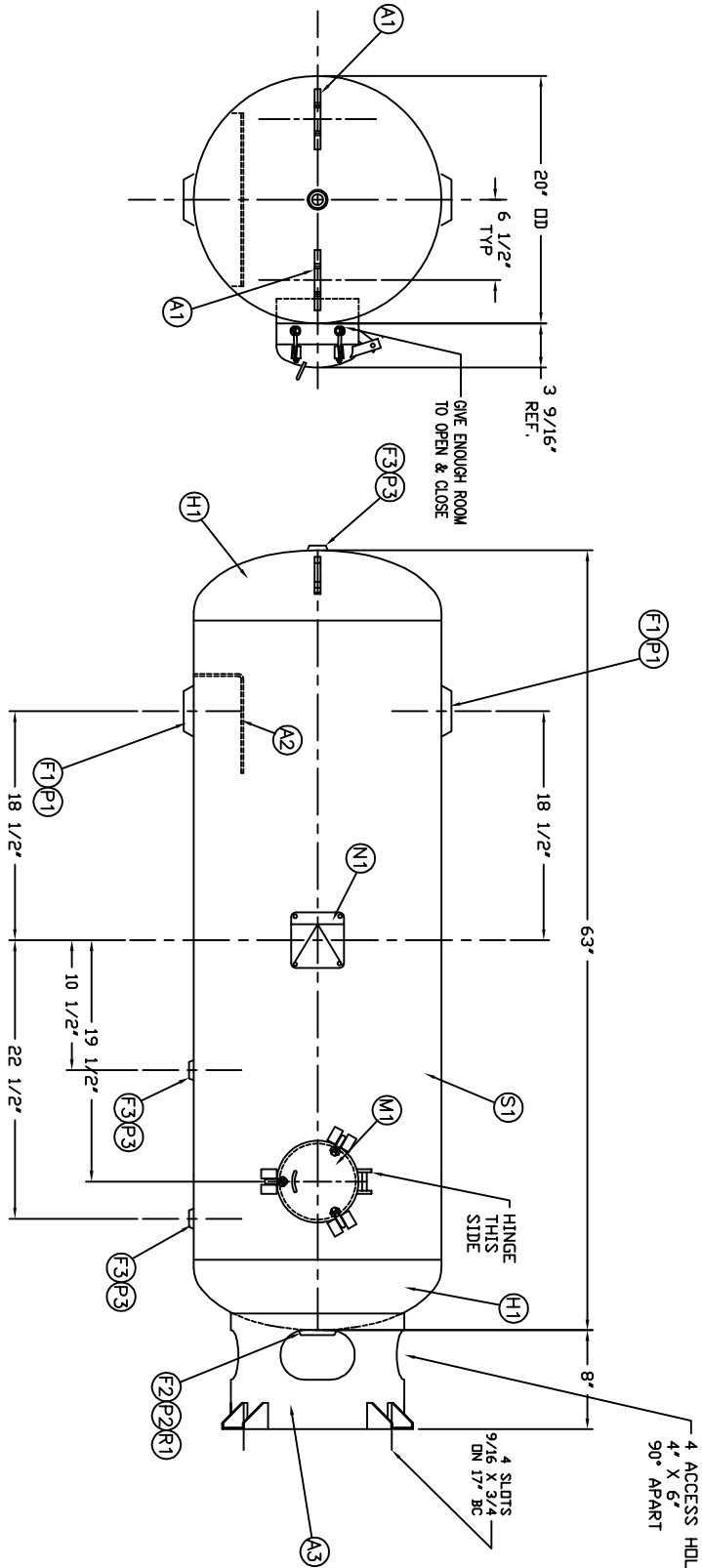


CODE/ADDENDA \_\_\_\_\_ APPROVED \_\_\_\_\_  
 RELEASED FOR PRODUCTION  
 Q.C. \_\_\_\_\_ DATE \_\_\_\_\_

NO.	QTY	PART NO.	DESCRIPTION	AP.G
A3	1		BASERING ASSY FOR 20" TANK	AP.G
N1	1		NAMEPLATE: ASME / NB GREY PRIMER	AP.G

NO.	QTY	PART NO.	DESCRIPTION
H1	2		
S1	1		
F1	2		FLANGE: 3" NPT RAD
F2	1		FLANGE: 2" NPT FLT (O-RING STYLE)
F3	3		FLANGE: 1/2" NPT
P1	2		PLUG: 3" PLASTIC
P2	1		PLUG: 2" NPS HX HD
P3	3		PLUG: 1/2" PLASTIC
R1	1		O-RING FOR 2" FLANGE
M1	1		HINGE CLOSURE 6.625 OD X .437 150 PSI SA106-B
A1	2		LIFT LUG 1/2" X 9-1/2"
A2	1		BAFFLE: .179 X 11-7/16 X 14



SYL DATE	BY	REVISION	APP

FULL VACUUM AT 566°F

NOTES

SPECIFICATIONS

0.0.20	LGTH. 63	0.0.20	LGTH. 63
MAMP 150	PSI @ 566 F	MAMP 150	PSI @ 566 F
CRN	---	CRN	---
WELD DETAILS: M-1932		WELD DETAILS: M-1932	
STD. TOLERANCES (UNLESS OTHERWISE NOTED): M-2461		STD. TOLERANCES (UNLESS OTHERWISE NOTED): M-2461	
GAL. 80 SA. CU.FT. FULL VACUUM AT 566°F CODE ASME SECT. VIII, DIV. 1 PER DATE OF DWG/LAST REV		GAL. 80 SA. CU.FT. FULL VACUUM AT 566°F CODE ASME SECT. VIII, DIV. 1 PER DATE OF DWG/LAST REV	
DRAWN BY	DATE	SCALE: NONE	DRAWING NO.
APP. BY	DATE		300957



VERTICAL VACUUM RECEIVER

Q.\3000\