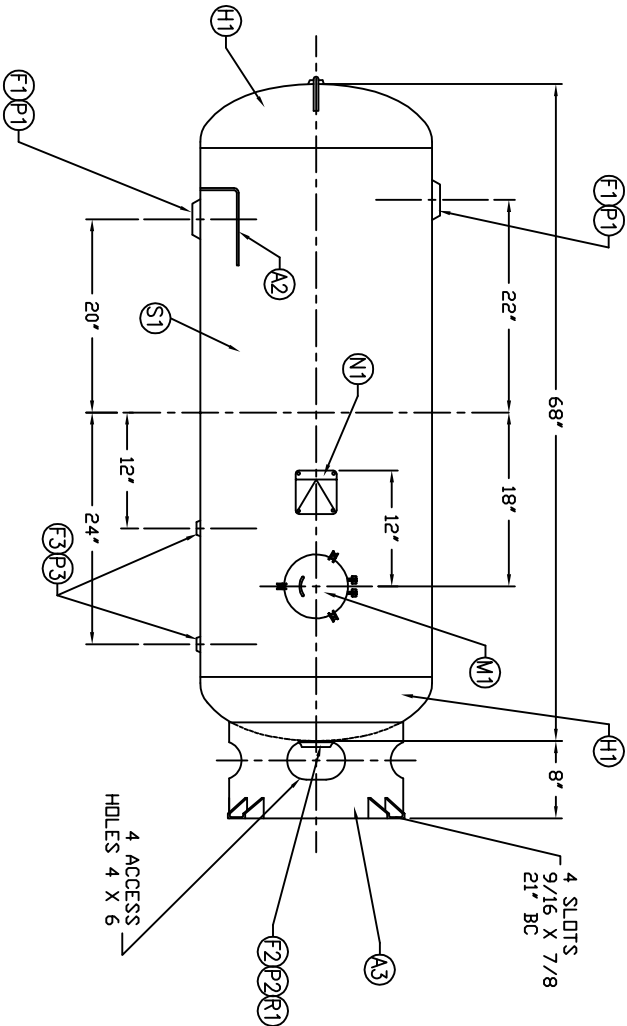
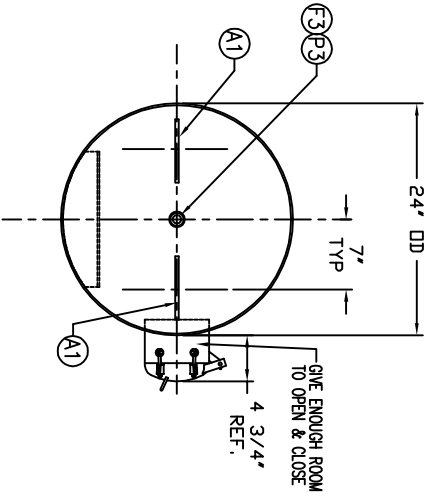


CODE/ADDENDA \_\_\_\_\_ APPROVED \_\_\_\_\_  
 RELEASED FOR PRODUCTION  
 Q.C. \_\_\_\_\_ DATE \_\_\_\_\_

NO.	QTY	PART NO.	DESCRIPTION
A3	1	A85083	BASERING ASSY FOR 24" TANK
N1	1		NAMEPLATE: ASME / NIB
			C1010

NO.	QTY	PART NO.	DESCRIPTION
H1	2		
S1	1		
F1	2		FLANGE: 3" NPT RAD
F2	1		FLANGE: 2" NPT FLT
F3	3		FLANGE: 1/2" NPT
P1	2		PLUG: 3" PLASTIC
P2	1		PLUG: 2" NPS HX HD (O-RING STYLE)
P3	3		PLUG: 1/2" PLASTIC
R1	1		O-RING FOR 2" FLANGE
M1	1	A78577	HINGE CLOSURE 6.625 OD X .437 150 PSI
A1	2	A21300	LIFT LUG 1/2" X 9-1/2"
A2	1	A78544	BAFFLE: .179 X 14 X 11 7/16



DATE \_\_\_\_\_ BY \_\_\_\_\_

REVISION \_\_\_\_\_

APP \_\_\_\_\_

FULL VACUUM AT 566°F

NOTES

SPECIFICATIONS

0.0.24 LGTH. 68  
 MAMP 150 PSI @ 566 F  
 RT-no MDMT -20 F @ 150 PSI  
 CRN ---  
 WELD DETAILS: M-1932  
 STD. TOLERANCES (UNLESS OTHERWISE NOTED): M-2461

GA. 120 SA.  
 WT. 385#  
 CULFT.

FULL VACUUM AT 566°F  
 CODE ASME SECT VIII, DIV 1  
 PER DATE OF DWG/LIST REV



VERTICAL  
 VACUUM RECEIVER

DRAWN BY \_\_\_\_\_ DATE \_\_\_\_\_  
 APP. BY \_\_\_\_\_ DATE \_\_\_\_\_  
 SCALE: NONE  
 DRAWING NO. 300958